



What we would like you to know... May 11, 2009

TLLCCF



2009 National Child Care Teacher Awards

Child care teachers from across the nation were honored at the Terri Lynne Lokoff/Children's TYLENOL® National Child Care Teacher Awards™ ceremony for being champions of high-quality child care. The National Child Care Teacher Awards™ pays tribute to 50 dedicated teachers each year for the education and care they provide to the children in their care.

Child care teachers work tirelessly to ensure the children in their care are reaching development stages for their age. When adults talk about measuring a child's growth, it goes beyond the child's height and weight. To a child care professional these measurements include milestones in how the child plays, learns, speaks and acts. Child care professionals are trained to know the developmental stages of child development. The Terri Lynne Lokoff/ Children's TYLENOL® National Child Care Teacher Awards™ honors these teachers for a job well done.

This year's awards recipients were feted at a day-long event beginning with a luncheon at Bloomingdale's. Dr. Deborah Schadler, Ph.D., assistant professor and coordinator of undergraduate education at Gwynedd-Mercy College, delivered the keynote address at the luncheon. Angela Bayer, owner, teacher and director of Angela's Child Development Preschool and a 2006 Terri Lynne Lokoff/Children's TYLENOL® National Child Care Teacher Awards™ recipient, spoke to this year's award recipients about the Early Care and Education forums she organized in Pennsylvania.

At the evening reception, the World Series Champion's mascot the Phillie Phanatic greeted the recipients and their family and friends. The Phillie Phanatic then led the award winners along the parade route to the ceremony site accompanied by the Upper Marion High School Marching Drum Line. The

TLLCCF



Lois B. Cohan Museums to Go

This year the Foundation is proud to provide funds to 25 Philadelphia child care center to participate in the Lois B. Cohan Museums to Go. The program provides child care centers serving at risk populations the opportunity to bring age-appropriate, cultural programs from outstanding local museums into the classroom.

Lois B. Cohan Museums to Go provides children with the opportunity learn and participate in different types of activities. The institutions offer traveling programs that offer lively, audience-participation sessions complete with props, animals, activities and more to the child care centers. Museum educators guide the children in programs that are designed to educate, inspire and entertain.

Four new cultural institutions were added to this year's Lois B. Cohan Museums to Go. They are noted by an asterisk.

2009 Recipients
 APM Community Child Care Center
 Bustelton United Methodist Church Child Care Center
 Caring Center
 Caring People Alliance at FELS South Philadelphia Community Center
 Caring People Alliance at R.W. Brown Community Center
 Caring People Alliance at West Philadelphia Community Center
 Children's Village Child Care Center
 Childspace Too Day Care Center
 Community Women's Education Project
 Concerns No. 13 Inc, Multi Purpose Learning Center

teachers received a standing ovation by 350 cheering spectators. Donna Kennebeck, Iowa Health Child Development Center in Des Moines, IA, was the Helene Marks Award recipient as the National Child Care Teacher of the Year.

The evening's keynote speaker was Timothy Phelps, president of the Tri County Area Chamber of Commerce. Other presenters who paid tribute to the award winners were Connie Williams, former PA State Senator, James Roebuck, PA State House of Representatives, Chairman of the House Education Committee, Jane Murray, representative to U.S. Congresswoman Allyson Schwartz, and Rachel Kaufman, assistant product director, Children's TYLENOL®, McNeil Consumer Healthcare. Glen Macnow, WIP Mid-Day Host, 610 WIP Sportsradio, was the master of ceremonies.

Visit www.tllccf.org to view more photos from the Terri Lynne Lokoff/Children's TYLENOL® National Child Care Teacher Awards™.

DCS Dixon Day Care Center
DCS Western Community Day Care Center
Drueding Center/Project Rainbow
Green Byrne Child Care Center
Ken Crest Kensington Center
Ken Crest North Center
Neighborhood Interfaith Movement
Norris Square Civic Association Children's Center
People's Emergency Center
Provider-to-Provider
Sound Start Childcare Center
Summit Children's Program
United Cerebral Palsy Best Friends
Washington Community Outreach Foundation at the Church of the Advocate
Westminster Mayfair Presbyterian Church Child Care Center

Participating Museums

Academy of Natural Sciences – “Academy on the Go”
African American Historical & Cultural Museum – “Tiny Tot” program and storyteller.
*ArcheDream for HUMANKIND
*Garden State Discovery Museum
*Mlanjeni Magical Puppet Theater
Musicopia
New Jersey Academy for Aquatic Science
Pennsylvania Academy of Fine Arts
*Philadelphia Insectarium
Philadelphia Zoo
Please Touch Museum
Spiral Q Puppet Theater
Walnut Street Theatre Touring Outreach Company

TLLCCF

A Message from The Executive Director

Times Are Changing and So Are We

The Terri Lynne Lokoff Child Care Foundation (TLLCCF) is transforming its business practices to compete in today's complex world. The TLLCCF has stuck to a tried and true formula for funding its programs virtually since inception in 1987. Now, in 2009, we find ourselves, along with everyone else, facing an unfamiliar landscape. Charitable giving is down. Assets of foundations have shrunk. The needs that nonprofits fill have increased. It's a pretty daunting picture for society. Here at the TLLCCF, we feel a change is inevitable and we want to be out in front of the curve.

This is one of the reasons that we have changed our newsletter format to electronic. On one hand, it is a significant cost savings. On the other it allows us to communicate with you, our constituents, more often. The pleasant side-effect of this change is that the electronic newsletter allows us to be timelier and more responsive to the things that you are doing and things that you want to know. Tell us your success stories. Share with us situations that might have been

TLLCCF

News You Can Use

Swine-Origin Influenza A (H1N1) Information for Child Care Providers

CDC has identified cases of swine-origin influenza A (H1N1) virus infection in people from several states. Please visit www.cdc.gov/swineflu for the most up to date information. It has been determined that this virus is spreading from human to human. Center-based and family child care programs should:

Review their plans for responding to a pandemic. Make sure that they are up to date and that parents know what they are.

Remind parents and enforce policies for having ill children stay at home during their illness. Children with symptoms of an influenza-like illness should not come to school. Symptoms of influenza include fever, cough, sore throat, body aches, headache, chills, fatigue, and, in some

prevented if high-quality child care had been an option. We want to know what makes you elated and what makes you angry; what makes you hopeful and what makes you discouraged. If it's important to you, then it's important to us. Please send any submissions to newsletter@childcareabc.org.

For those who know what we do but may not be familiar with how we operate, the TLLCCF is a 501 (c)(3) nonprofit corporation. The TLLCCF was not established with a large endowment. We must raise the funds we need to operate and to fund all of our initiatives year-to-year. Our success in fundraising reflects in our ability to give and advocate during the following year. We are fortunate to have added to our surplus over the last several years, which has enabled us to continue with our grants and programs. National Child Care Teacher Awards™, our primary *raison d'être*, continues as strong as ever thanks to Children's **TYLENOL®**, which has verbally committed to title sponsorship of the awards again in 2010.

We are seeking additional national corporate sponsors for the awards and are interested in creating a platform that provides synergistic value to these event partners. Our goal is to bring in five additional strategic national partners to join Children's **TYLENOL®** in honoring outstanding child care teachers and raising awareness of the importance of high-quality early care and education.

Another aggressive goal is to take our Lois B. Cohan Museums to Go program literally on the road. Currently a Philadelphia-only initiative bringing quality arts, cultural and learning experiences into nonprofit, nonsectarian classrooms serving at-risk children, this program shows the promise of being transferrable to other inner-city areas. We will be looking for funding and administrative volunteers in other areas of the country and hope to have a pilot program running in a second city sometime during 2010.

Child Care Center Enhancement Grants remain a connection to our local southeastern Pennsylvania child care community. They exemplify our goal of improving the quality of early care and education for all children. There are years when the amount of these grants may be reduced based on the economy and our ability to raise funds. When that happens we don't hesitate to seek corporate help for these programs. We are grateful this year to **PNC Foundation**, **TD Charitable Foundation** and **WPVI-TV/6abc** for grants made in 2009 specifically to fund this program for child care centers serving children at-risk.

We are also grateful to the child care friends and acquaintances we have made through the years; to our corporate, foundation and individual supporters; to other agencies with which we have a working relationship and whose goals are parallel to ours; to our human assets comprised of our board, our volunteers and those who work with us; and to the readers of this newsletter who we urge to get actively involved in making America better by improving early care and education.

cases diarrhea. The child's health care provider will determine whether influenza testing is needed and when the child can return to child care. In most areas, children with other, mild respiratory illnesses including allergies may be allowed to attend child care as long they are able to participate comfortably and their care does not result in a greater need for care than the staff can provide without compromising the health and safety of the other children (Caring for Our Children- Standard 3.065).

Remind workers not to come to work while if they have an influenza-like illness. They should consult their health care provider to determine whether influenza testing is needed.

Health departments in areas where cases of persons affected with this new virus have been identified may recommend more rigid exclusion policies so providers will need to stay informed on what is happening in their communities.

Child with influenza may be infectious for up to 10 days after illness onset with influenza while adults are thought to likely infectious for 5-7 days. Public health investigators are working to more precisely learn the length of infectiousness. If a child has been confirmed to have swine-origin influenza, then seek the advice of the child's health provider and the health department about when the child can return to the child care program

Be familiar with local/state plans for child care in the event of a mild or severe pandemic. This information may be available from state or local health authorities, child care licensing agencies or resource and referral agencies. If these plans do not include specific approaches to communicate with and handle situations in child care, do what you can to advocate for updating the plans.

Develop and implement a system to track illness and absence due to illness among children and staff if one is not already in place. The system should be simple and easy to maintain but should record the number of persons with various illnesses (e.g. respiratory, diarrhea, rash) by day or at least by week.

Review and implement CDC Guidelines and Recommendations for Preventing the Spread of Influenza (the Flu) in Child Care Settings: Guidance for Administrators, Care Providers, and Other Staff, (<http://www.cdc.gov/flu/professionals/infectioncontrol/childcaresettings.htm>)

Make sure staff are familiar with the above guidelines and that they are being followed in your program. Remind child care staff to clean/disinfect/sanitize frequently touched surfaces within the facility.

Provide information to parents on steps that they could take to prevent flu. (See attached fact sheet that could be distributed to each parent or posted on a door to the facilities with providers calling attention to the posted fact sheet).

Monitor the postings on the CDC web site about this virus (www.cdc.gov/swineflu) and information from state or local health departments to see if child care facilities should begin preparing for possible closure or changes in operation.

Work with parents to consult the child's health provider if you have questions about a child with a respiratory illness or if you suspect a child might have influenza. Contact your child care health consultant or local public health department if you need help to make decisions promptly that affect the children as a group

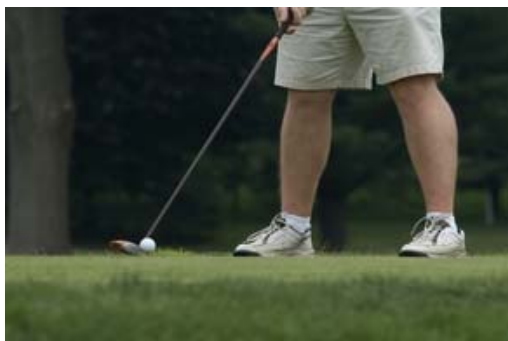
Child care and preschool programs can help protect the health of their staff and the children and families they serve by calling attention to the everyday preventive actions that parents can initiate to protect their children.

Please consider posting or distributing the attached message in your child care facility.

More information on preventing the spread of influenza can be found at: <http://www.pandemicflu.gov/plan/school/preschool.html>.

TLLCCF

TLLCCF



2009 Golf, Bridge & Games Classic

The 2009 Golf, Bridge & Games Classic will be held on Monday, June 15, 2009 at the Green Valley Country Club in Lafayette Hill, PA. The annual fund raising event, which benefits area child care centers, always promises a full day of fun, food, friends and a sporting good time.

Fees for the sponsorships and registration have been reduced for the Golf, Bridge & Games Classic. Similar to you - our supporters, we are also faced with cost cutting measures and, must watch our budget carefully so we can continue to provide grants and awards to child care centers, teacher and providers. The economic downturn is having an effect on everyone, especially on our most vulnerable citizens – the children of low income families. Please consider coming out to support the Foundation and the work it accomplishes everyday on behalf of the child care community.

Check out the sponsorship opportunities for the Classic on our web site and take advantage of the convenient sign up at www.tllccf.org.



Annual Meeting

The Terri Lynne Lokoff Child Care Foundation will hold its 2009 Annual Meeting on Tuesday, May 19 at the PNC Bank Center in Philadelphia, PA. This year the TLLCCF will present 18 Child Care Center Enhancement Grants to area child care centers in the five Philadelphia area counties - Bucks, Chester, Delaware, Montgomery and Philadelphia.

Child Care Center Enhancement Grants is the Foundation's oldest program. Grants are given to nonprofit, nonsectarian child care centers to implement specific changes and to improve the quality of child care provided. The grants allow child care centers to enhance the existing curriculum, institute new curriculum, afford child care teachers the opportunity to attend professional development classes and workshops, and improve the physical plant by making the classrooms and playgrounds safer.

In addition, Founder Kay Lokoff will install new officers to the Board of Directors. Suzanne du Pont of West Chester will be installed as the president. In August 2008, Suzanne was appointed to the position of president of the board of directors when Barbara McCabe stepped down to move with her family to North Carolina. Lucy Provost of Wallingford will be appointed to the position of secretary and Erin Connolly-Shaffer of Narberth will be appointed to the position of vice president.

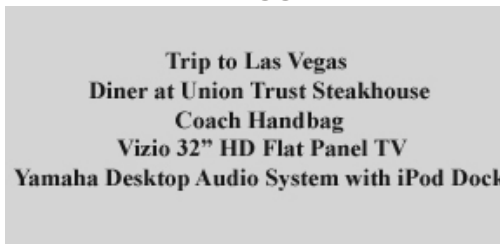
TLLCCF



Alumni Making A Difference

2006 National Child Care Teacher Award recipient Loretta Akins is putting her feet where her mouth is -- She's running marathons. We recently received an email from Loretta telling us about the marathon she ran in Portland, Oregon for the Leukemia and

TLLCCF



Take a Chance for Charity

The Terri Lynne Lokoff Child Care Foundation is holding its annual raffle in conjunction with its 21st Annual Golf, Bridge & Games Classic. The 1st prize is a trip for two to Las Vegas for 4 days and 3 nights, includes air and hotel, 2nd prize: dinner for 4 at Union Trust Steakhouse, including house wine,

Lymphoma Society in October 2008, where she raised more than \$1,900 for the cause. She said as a teacher, she wanted to be a role model for the children. She said this was a way to teach the children about compassion and public service. Loretta credited the Terri Lynne Lokoff Child Care Foundation and winning the National Child Care Teacher Awards for helping her find the confidence in herself and giving her the encouragement to pursue other passions and interests.



Danny's Growing Up

Danny has been the face of our newsletter for the last two years, and he is growing up. He was two years old when the picture you see on our masthead was taken, Danny is now four a half and headed for kindergarten in the fall. Although we don't practice age discrimination at the Terri Lynne Lokoff Child Care Foundation, Danny's spokes-model career with us will soon end. We are on a talent hunt and here's how it works: Send us a photo of your child or grandchild along with permission to use it in our published materials along with a check. One-hundred dollars will buy the masthead of our newsletter for one month. Two-hundred-seventy-five dollars buys three months and for \$1,000 your child will be on the masthead for a year. TLLCCF will determine if the quality of digital photos is suitable for use. Those choosing to purchase the full year may change photos quarterly. This opportunity is first-come, first-serve. Please contact allan@childcareabc.org if interested.

courtesy of Union Trust Steakhouse, 3rd prize: a Coach Handbag, courtesy of Bloomingdale's King of Prussia, 4th prize: Vizio HD flat panel LCD television, courtesy of Jamie & Jodi Lokoff, and 5th prize is a Yamaha Desktop Audio Systems with iPod Dock, courtesy of The Virtual Representative. Tickets are \$25 each or five for \$100. Raffle ticket holders need not be present to win. To purchase send check to TLLCCF, 100 Ross Road, Suite 160, King of Prussia, PA 19406 or tickets may be purchase day of event - June 15, 2009.



Mea Culpa

Dear Friends,

On Wednesday, April 29, 2009 you may have received a working draft of our first ever electronic newsletter. Be assured the technical error will not be repeated...we hope. Know that going forward you will receive only one copy of our newsletter, not two. Please bear with us as we navigate our way through cyberspace. We anticipate publishing a newsletter due out on the 1st of each month. As always, let us know your thoughts, and share your ideas and knowledge with us.

Thank you.

TLLCCF Staff

Name	Title	Office Phone	Cell Phone
Allan Miller	Executive Director	610-992-1140	
Lisa Kemmerer	Office Manager	610-992-1140	
Sharon Bell	Events Manager	610-992-1140	
Lisa Tordo	Communications Manager	610-992-1140	

TLLCCF Product Lines

Board of Directors	Government Relations	Corporate	Advisory Board
Prospects/Sponsors	Individuals	Teacher Award Recipients	TLLCCF Test

Sent on behalf of

Terri Lynne Lokoff Child Care Foundation
TLLCCF
100 Ross Rd., Suite 160
King of Prussia, PA 19406
610-992-1140

[Newsletter feedback or to unsubscribe](#)

Powered by:



support@virtual-representative.com